



**RIPE
NCC**

IPv6 Deployment in Europe

Mirjam Kühne, RIPE NCC

- Réseaux IP Européens Network Coordination Center
- Located in Amsterdam
- Not-for-profit membership association under Dutch law
- 11,000 members in 76 countries
- One of five Regional Internet Registries
- Independent, neutral, open



Member Services

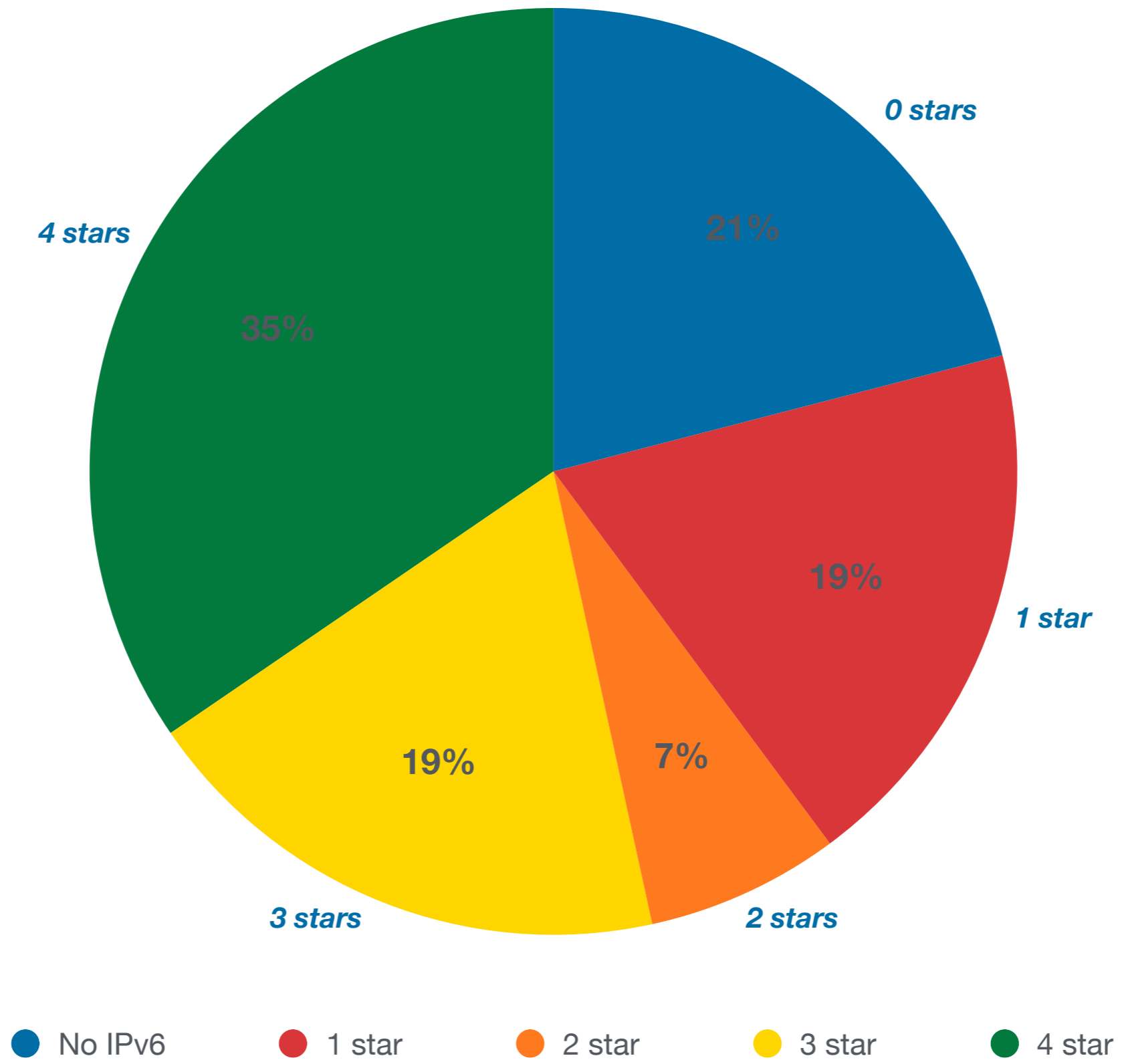
- Resource Distribution (IPv4, IPv6, ASNs)
- Resource Certification (RPKI)
- Training, Webinars

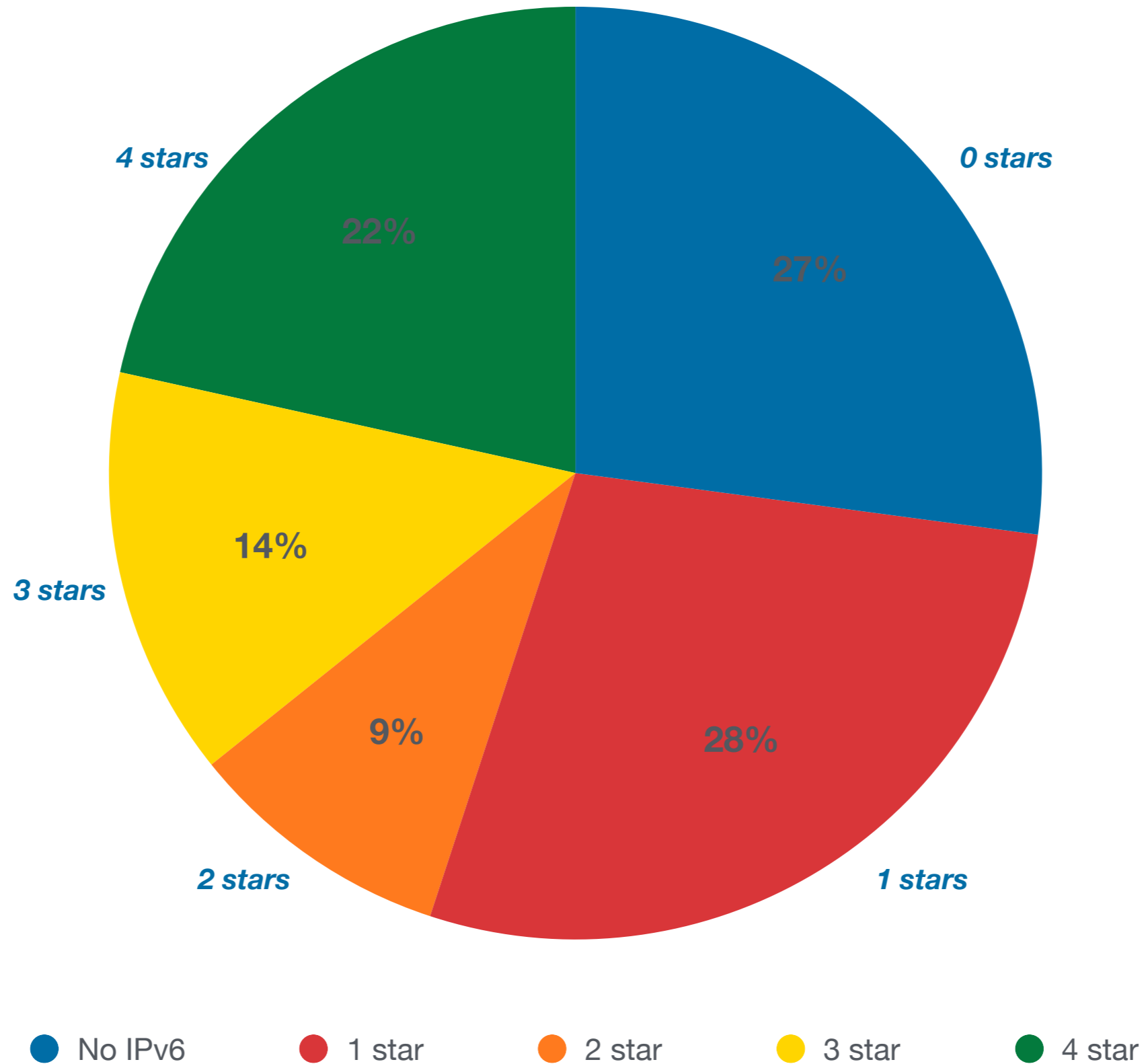
Public Services

- RIPE Database
- K-root server
- Open community meetings
- Various operator tools (RIPE Atlas, RIPEstat, RIPE Labs, DNSmon)

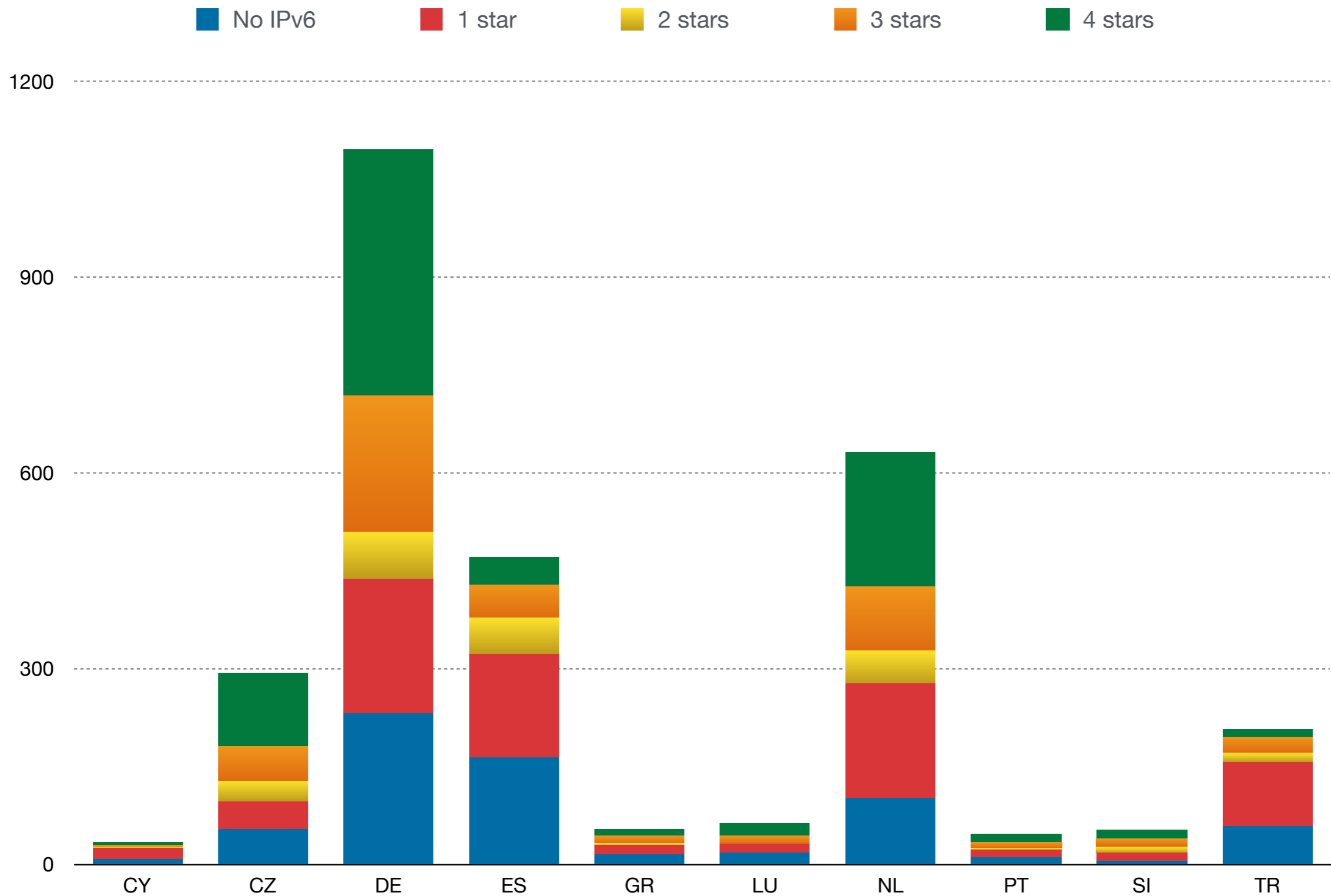
- Rating system to monitor IPv6 adoption rates amongst RIPE NCC Members
- Stars are awarded for various steps in IPv6 deployment:
 - Obtaining IPv6 addresses
 - Visibility in global routing table
 - Setting up routing registry entries
 - Setting up reverse DNS
- Per country statistics published daily
 - <http://ripeness.ripe.net/>

IPv6 RIPEness in DE (1,097 Members)

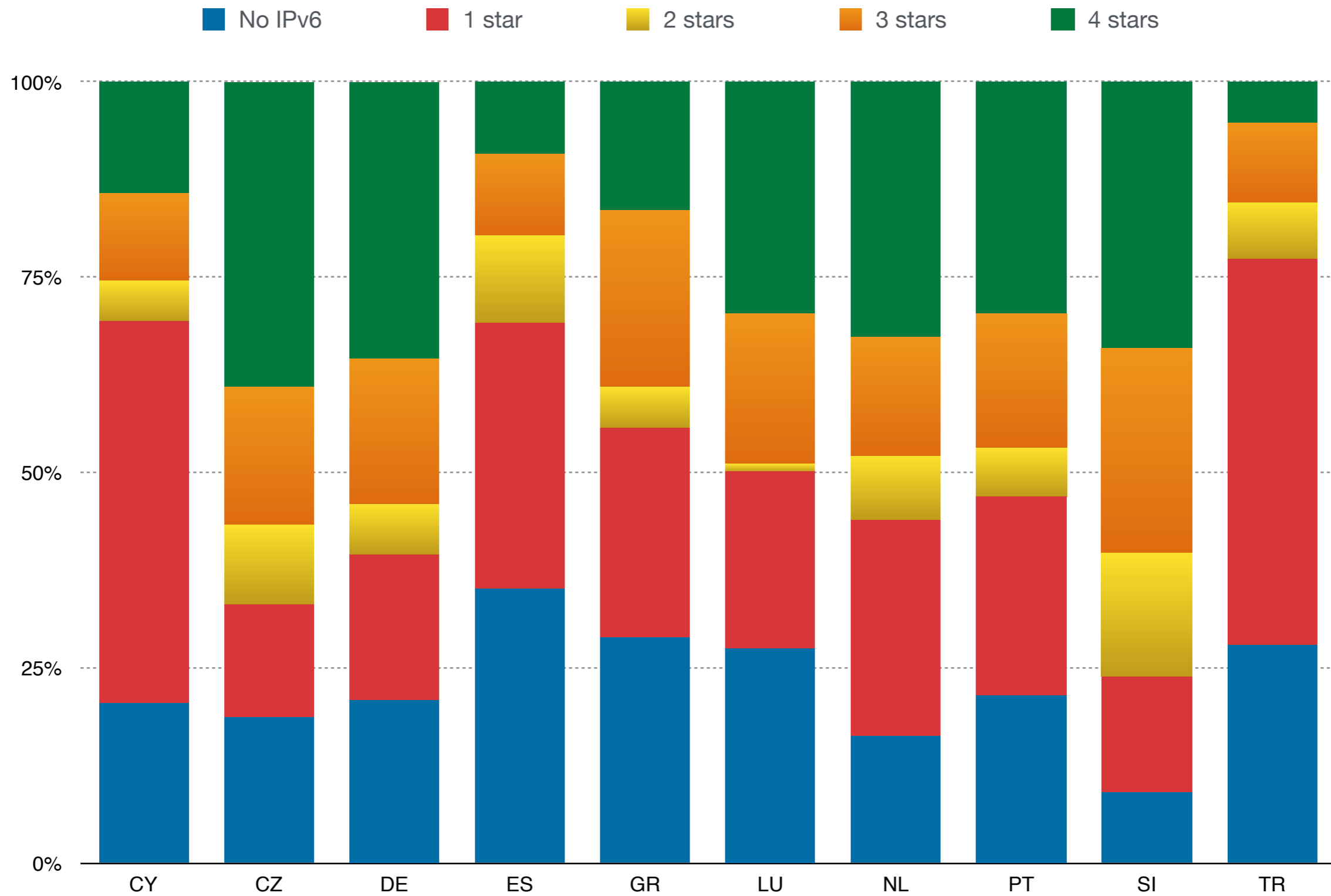




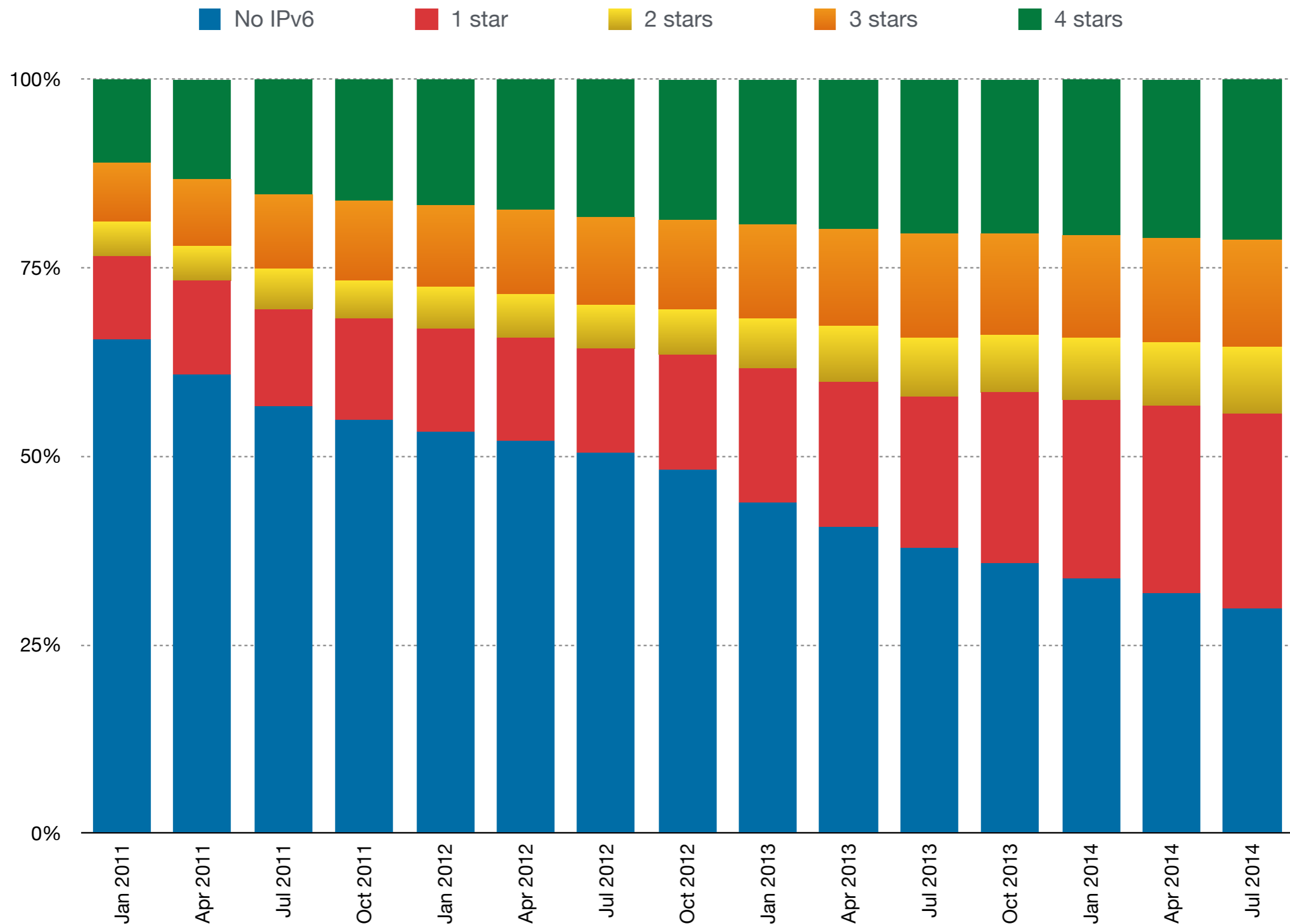
IPv6 RIPEness GEN6 Countries



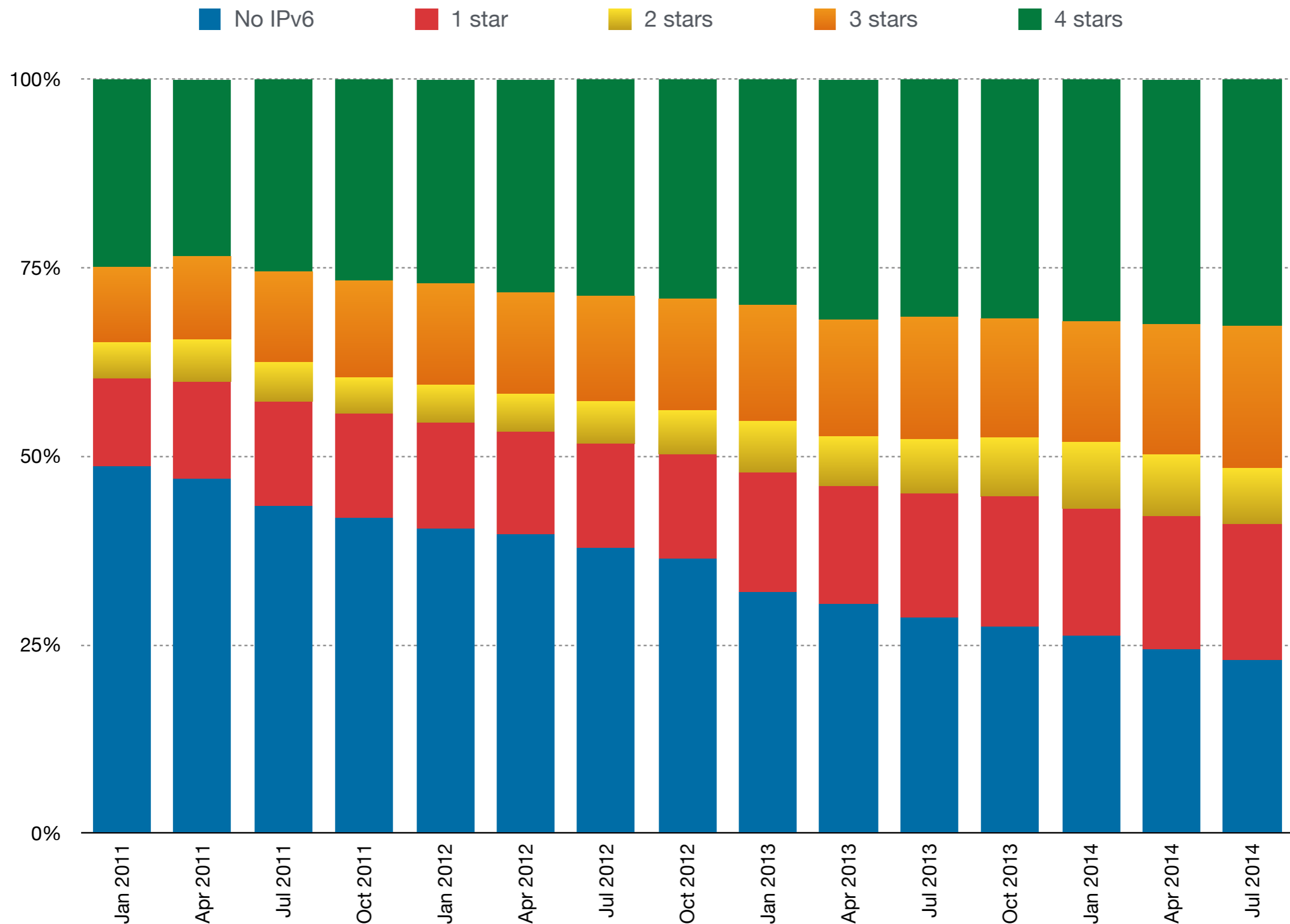
IPv6 RIPEness GEN6 Countries (relative)



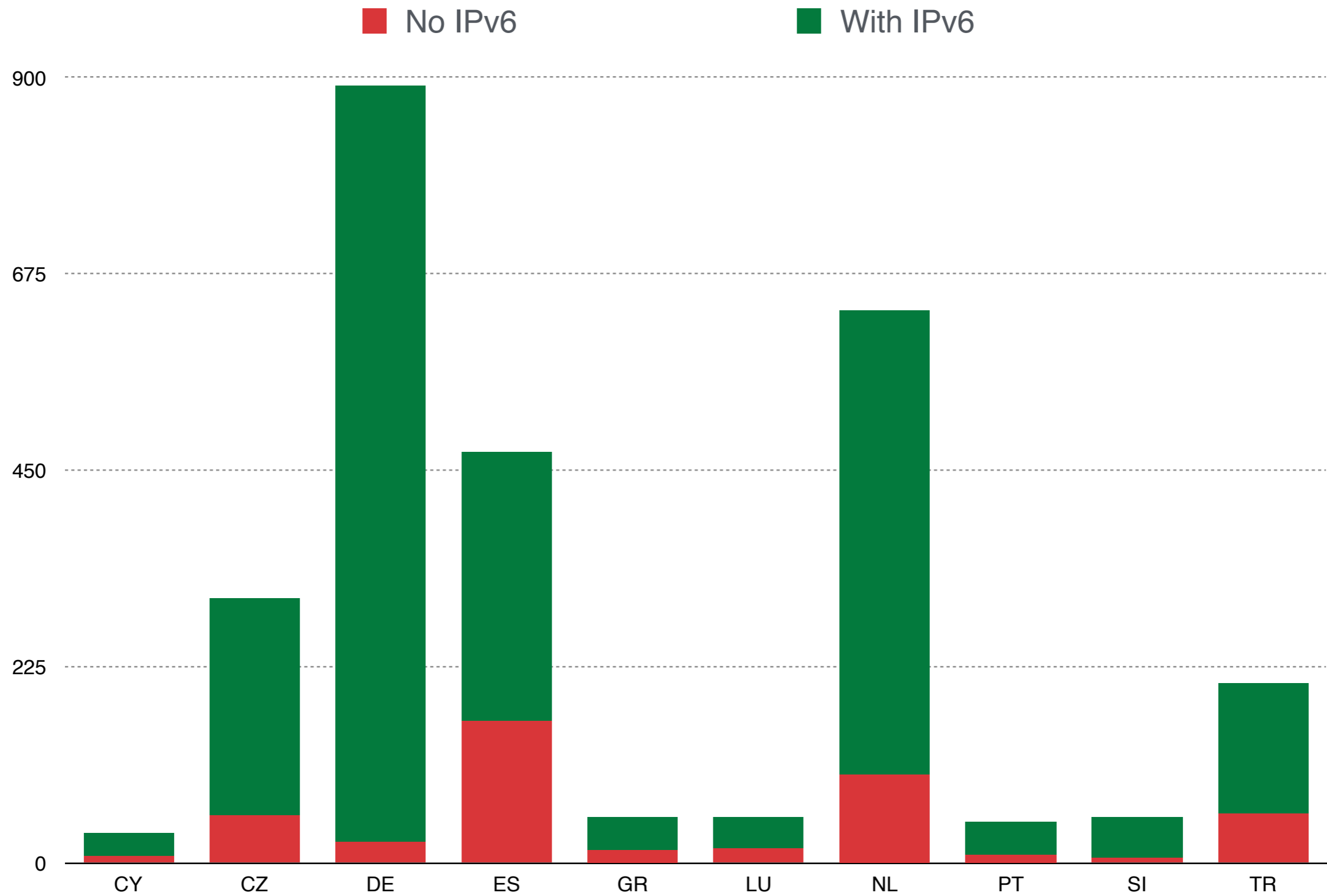
IPv6 RIPEness Over Time (All)



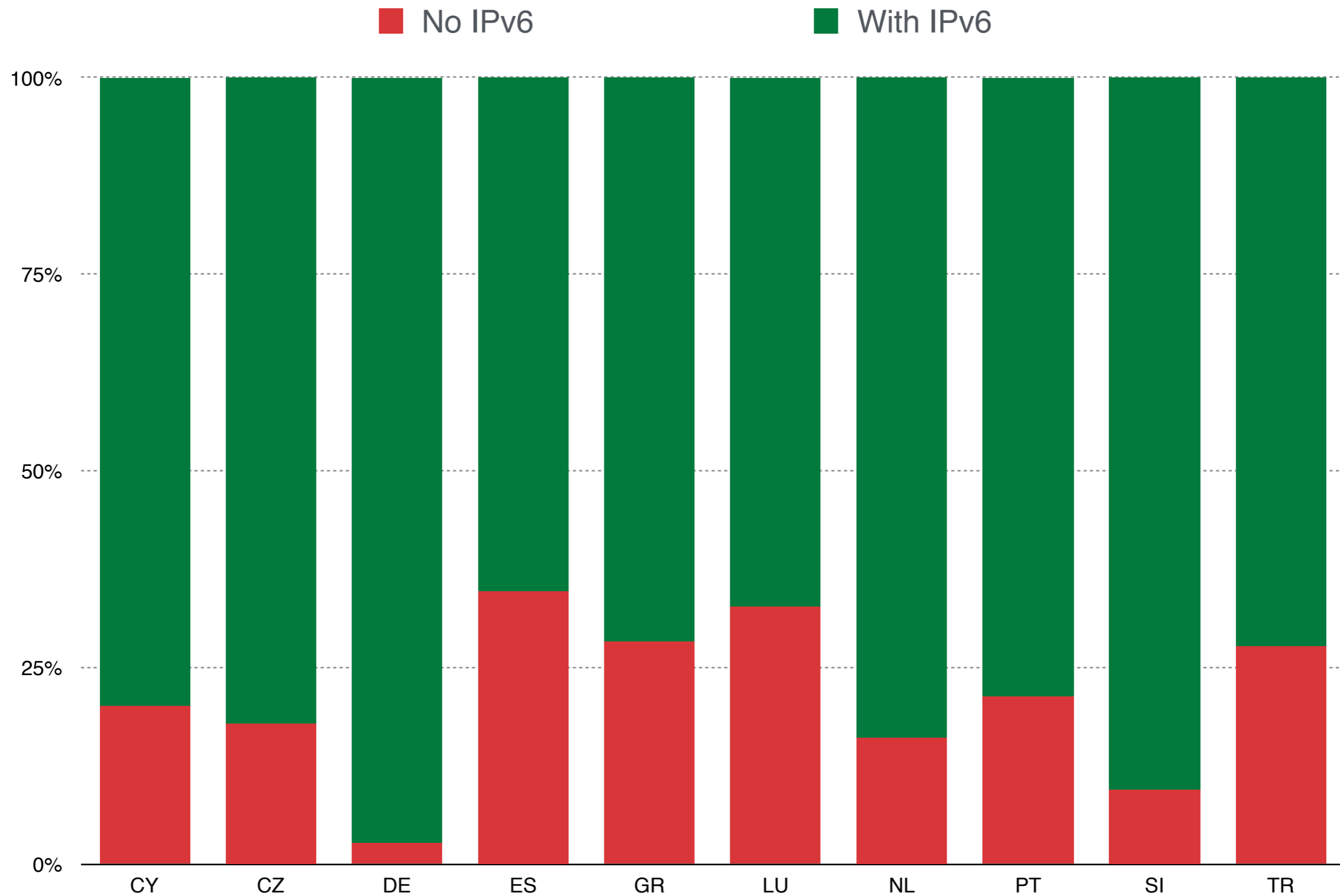
IPv6 RIPEness Over Time (DE)



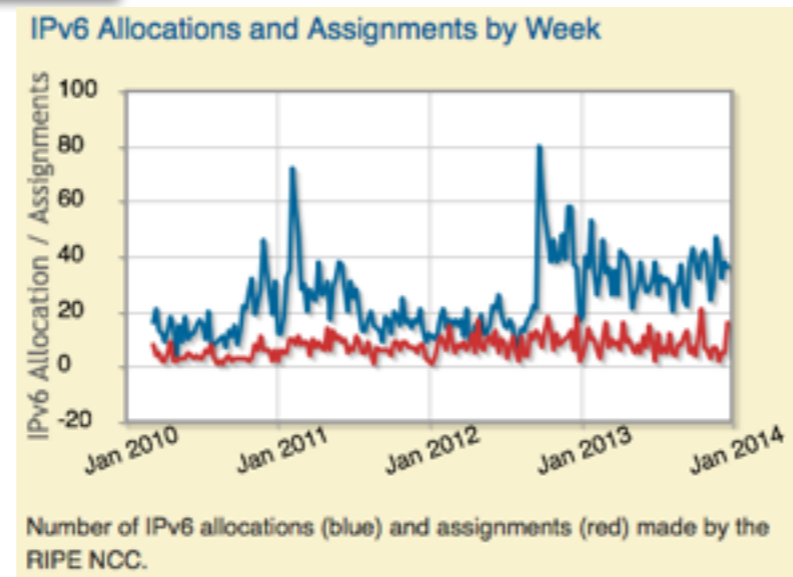
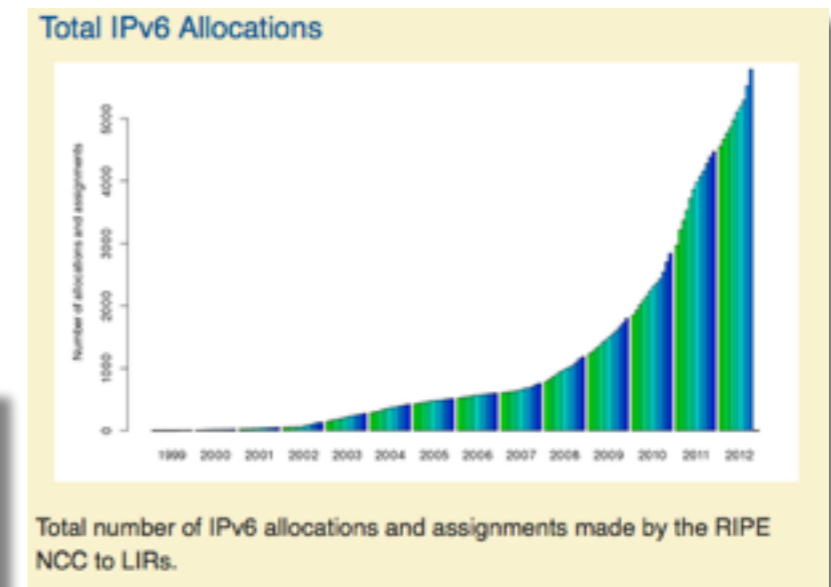
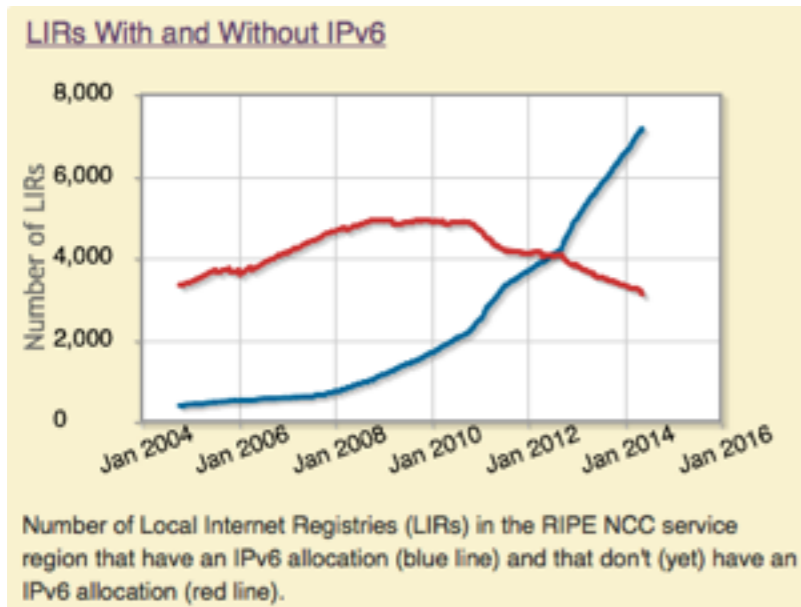
Members With and Without IPv6



Members With and Without IPv6

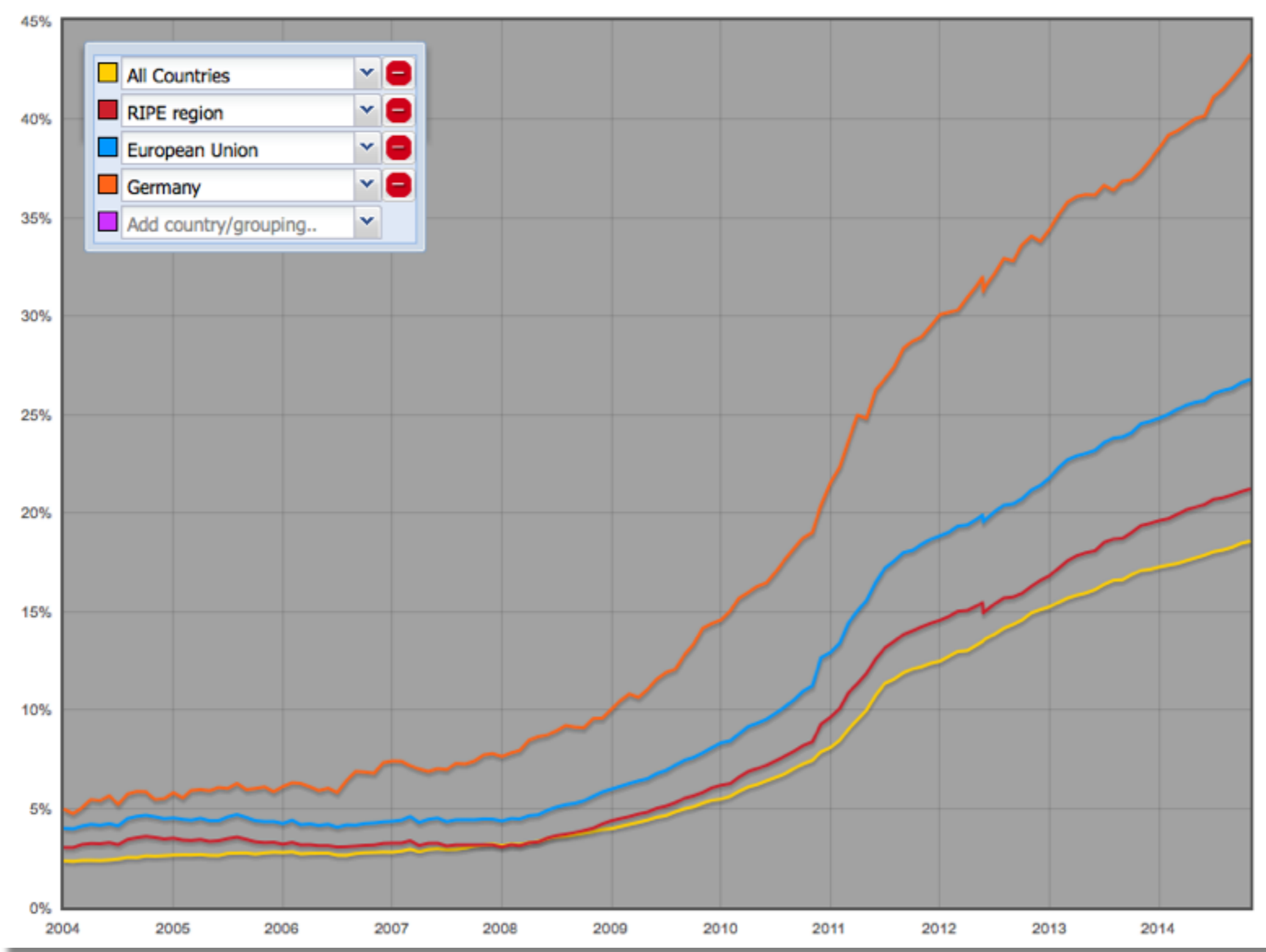


- Statistics Dashboard on RIPE Labs
 - <https://labs.ripe.net/statistics/?tags=ipv6>

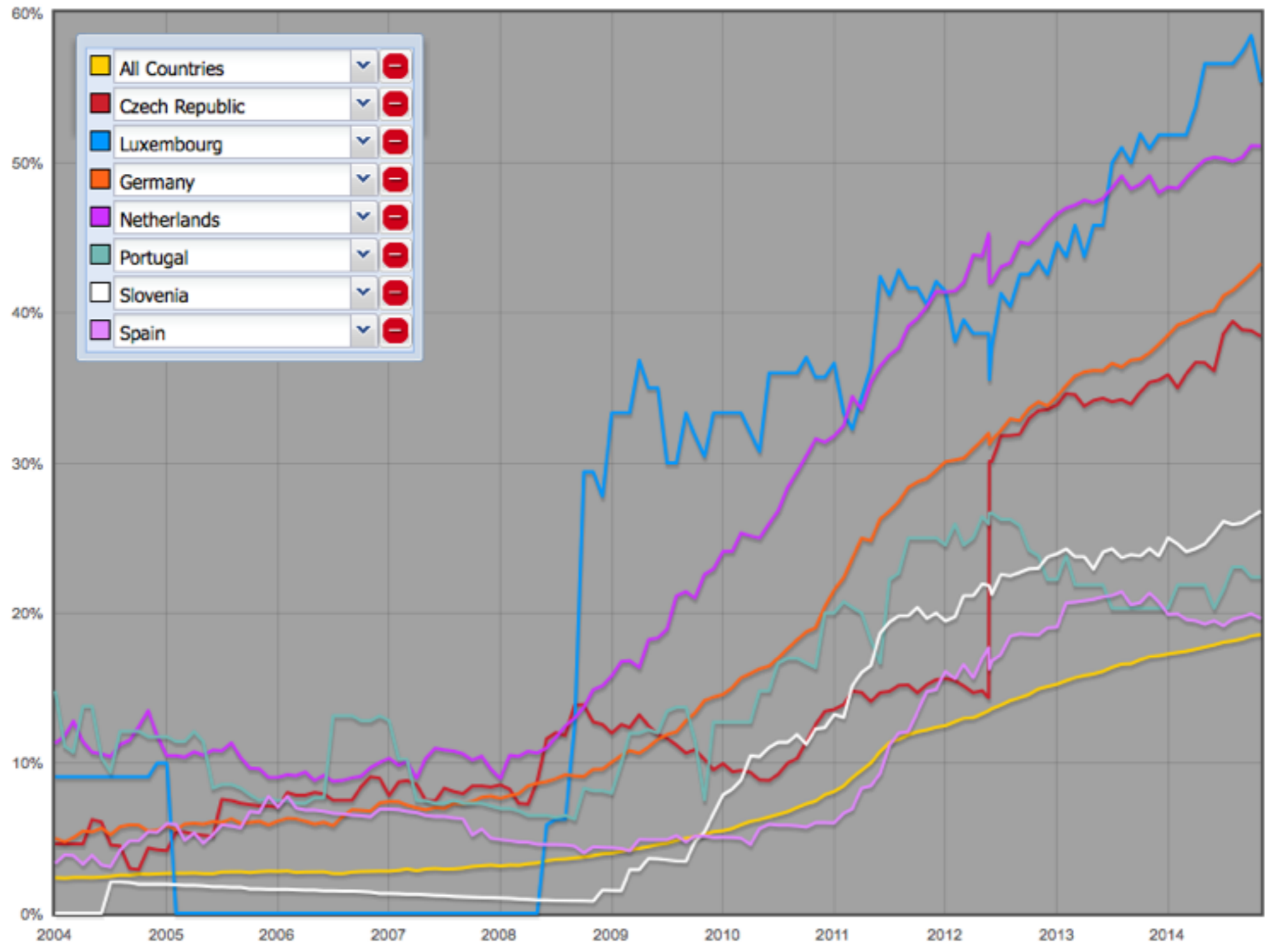


- RIPE NCC monitors global routing table for statistical analysis
 - Data available via RIPEstat (<http://stat.ripe.net>)
- Dedicated interactive tool for IPv6
 - Measures number of networks that originate routes for IPv6 address blocks
 - Grouped by country and regions
 - <http://v6asns.ripe.net>

Networks Originating IPv6 Routes



Networks Originating IPv6 Routes



Try it yourself at <http://v6asns.ripe.net>



- RIPEstat also takes ISO code as input
 - Shows statistics on number of resources and bandwidth
 - Try it yourself at <http://stat.ripe.net>

